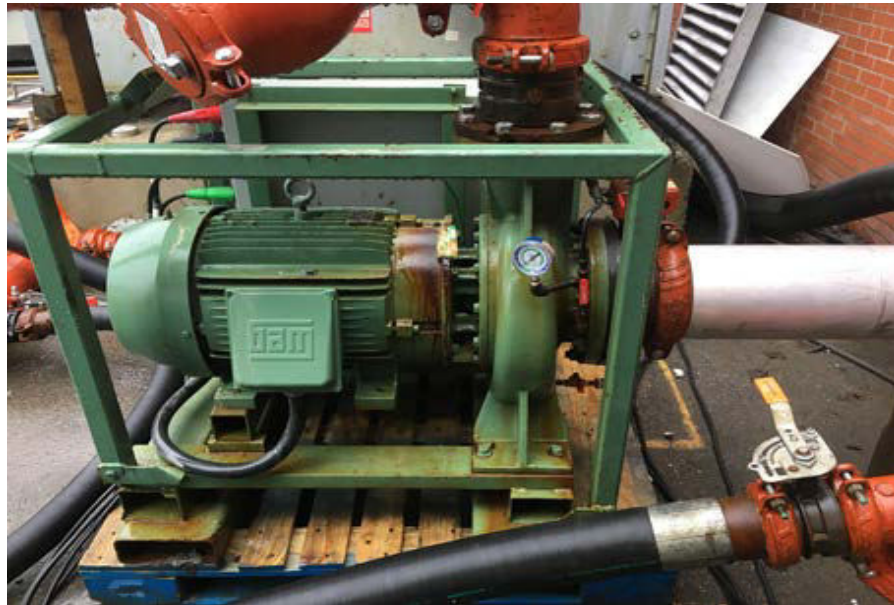




# POM 1500100



<b>MODÈLE</b>		CI6011-11,1E2
<b>Supplier</b>		TACO
<b>Flow (GPM)</b>		1500
<b>Variable frequency drive</b>		OPTIONNEL
<b>Pressure (ft)</b>		100
<b>Motor (HP)</b>		50
<b>Dimensions</b>	L	40"
	I	36"
	H	37"
<b>Connection type</b>		VICTAULIC
<b>connections size in / out</b>		8" / 6"
<b>Voltage</b>		600V
<b>Main Braker size</b>		48A/60A
<b>Approx.weight (lbs)</b>		1250